



Wall / Ceiling Lighting

Down/up light versions mounted on vertical walls for uniform diffused light in the setting or on the ceiling.

Ceiling-mounted lights for general lighting ensuring excellent visual comfort.

Wall Lighting

P8 **B-03 / B-15M**
P10 **B-04S**
P10 **B-04F**
P12 **B-11**
P12 **B-11D**
P12 **B-11R**
P14 **B-12**
P14 **B-12D**
P16 **B-13**
P18 **B-13A**
P20 **B-14**
P22 **B-16**
P24 **B-17**
P26 **B-18**

P28 **B-140**
P30 **B-142**
P32 **B-190R**
P34 **B-211**
P36 **B-201**

Ceiling Lighting

P38 **X-01**
P40 **X-02**
P42 **X-03**



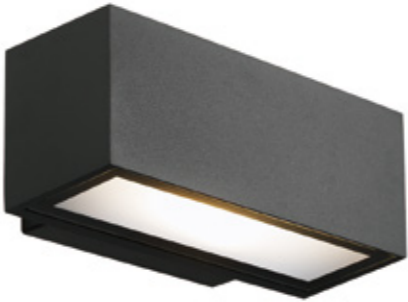
Power	9W / 15W	10W	10W	9W	18W	9W	12W	18W	12-25W	12W	9-12W
Light flux LM	716 / 1275	1100	1100	750	1500	750	1050	2100	1080→2250	1050	750→1080
Colour temperature K	3000 / 4000	3000 / 4000	3000 / 4000	3000 / 4000	3000 / 4000	3000 / 4000	3000 / 4000	3000 / 4000	3000 / 4000	3000 / 4000	3000 / 4000
Double colour temperature options	●	●	●	-	-	-	-	-	●	●	-
Sensor options	-	●	●	-	-	-	-	-	-	●	-
Emergency options	-	●	●	-	-	-	-	-	-	●	-
DALI	●	●	●	-	-	-	-	-	●	-	-
Ceiling-mounted	-	●	-	-	-	-	-	-	-	-	-
Wall-mounted	●	●	●	●	●	●	●	●	●	●	●
Number of size	2	2	2	1	1	1	1	1	2	1	2

Ceiling Lighting



Power	9-40W	12-80W	6-12W	6-12W	3-12W	12W	25W	25W	12-25W	9-36W	25W
Light flux LM	950→4000	1020→8200	480→900	450→900	250→720	1080	2360	2360	1050→2150	825→3060	2350
Colour temperature K	3000 / 4000	3000 / 4000	3000 / 4000	3000 / 4000	3000 / 4000	3000 / 4000	3000 / 4000	3000 / 4000	3000 / 4000	3000 / 4000	3000 / 4000
Double colour temperature options	-	-	-	-	●	●	-	●	-	-	●
Sensor options	-	-	-	-	●	●	-	●	-	-	●
Emergency options	-	-	-	-	-	●	-	●	-	-	●
DALI	-	●	-	-	-	●	●	●	-	-	●
Ceiling-mounted	-	-	-	-	-	-	-	-	●	●	●
Wall-mounted	●	●	●	●	●	●	●	●	-	-	●
Number of size	2	3	2	2	2	1	1	1	2	3	1



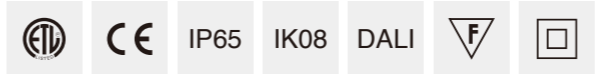


B-03
9W



B-15M
15W

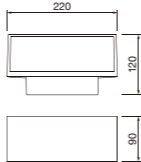
简述 Description



- 灯具外壳采用铝合金压铸成型
- 超白磨砂钢化玻璃，具有高视觉舒适性和均匀配光
- 防紫外线聚氨酯塑粉喷涂表面，耐腐蚀可以达1000小时以上
- 无生物蓝光危害风险，符合EN62471: 2008 标准
- 灯具表面最高温度不超过50度，安全可靠

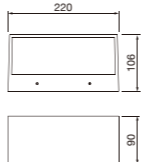
- The lighting body made by die-casting aluminium.
- Super white tempered glass, with high visual comfort and uniform lighting distribution.
- Surface anti-ultraviolet pure polyester powder painting, Corrosion resistance can be more than 1000 hours.
- No photo-biological risk, in accordance with EN 62471:2008.
- The maximum surface temperature of all accessible part under 50 degrees for safety and reliable.

技术参数 Technology data



B-03

Code	Power	LED Qty	Input Voltage	Lumen	Beam Angle	Packing Size	Pcs/Box
LED chips - 2835 B-03LED9-18B	9W	9*2	100V-240V	716	100°	285*245*230	4



B-15M

Code	Power	LED Qty	Input Voltage	Lumen	Beam Angle	Packing Size	Pcs/Box
LED chips - 2835 B-15MLED15-72B	15W	36*2	100V-240V	1275	100°	330*250*270	6

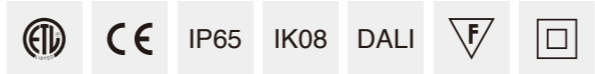


B-04S/04SR
10W/10W



B-04F/04FR
10W/10W

简述 Description

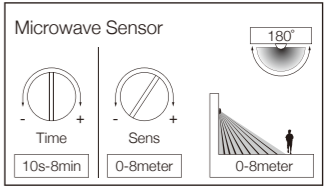


- 铝压铸灯具底座及散热组件
- 超白磨砂扩散PC透明罩，具有高视觉舒适性
- 防紫外线聚氨酯塑粉喷涂表面
- 无生物蓝光危害风险，符合EN62471: 2008 标准
- 灯具具有双色温切换功能

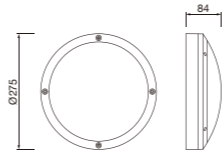
其他功能选项:
微波感应功能 / 应急功能 / 双色温切换功能

- Aluminum die casting base and heatsink.
- Super white frosted PC diffuser. with high visual comfort light distribution.
- Surface anti-ultraviolet pure polyester powder painting.
- No photo-biological risk, in accordance with EN 62471:2008.
- The luminaire has double colour temperature switch options.

Other Options:
Microwave options / Emergency options / Colour temperature options

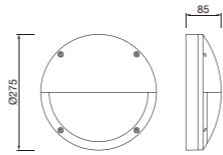


技术参数 Technology data



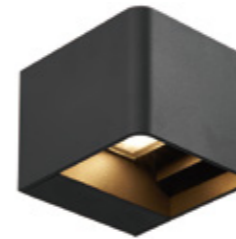
B-04S/04SR

Code	Power	LED Qty	Input Voltage	Lumen	Beam Angle	Packing Size	Pcs/Box
LED chips - 2835							
B-04SLED10-192	10W	96+96	100V-240V	1100	120°	310*310*400	4
B-04SRLED10-192 (Microwave Sensor)	10W	96+96	100V-240V	1100	120°	310*310*400	4

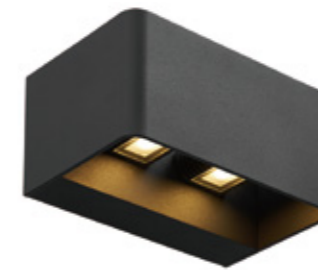


B-04F/04FR

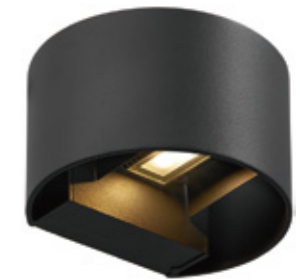
Code	Power	LED Qty	Input Voltage	Lumen	Beam Angle	Packing Size	Pcs/Box
LED chips - 2835							
B-04FLED10-120	10W	60+60	100V-240V	1100	120°	310*310*400	4
B-04FRLED10-120 (Microwave Sensor)	10W	60+60	100V-240V	1100	120°	310*310*400	4



B-11
9W



B-11D
9W*2



B-11R
9W

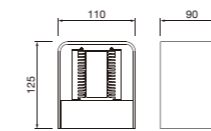
简述 Description



- 灯具外壳采用铝合金压铸成型，铝型材装饰盖
- 模组式光源模块，灯具出光角度可调
- 防紫外线聚氨酯塑料喷涂表面，耐腐蚀可以达1000小时以上
- 无生物蓝光危害风险，符合EN62471: 2008 标准
- 灯具表面最高温度不超过50度，安全可靠

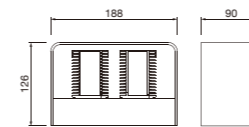
- The lighting body made by die-casting aluminium, extruded aluminium cover.
- LED module is used inside, and the light angle can adjustable.
- Surface anti-ultraviolet pure polyester powder painting, Corrosion resistance can be more than 1000 hours.
- No photo-biological risk, in accordance with EN 62471:2008.
- The maximum surface temperature of all accessible part under 50 degrees for safety and reliable.

技术参数 Technology data



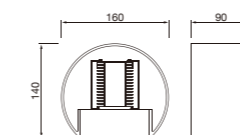
B-11

Code	Power	LED Qty	Input Voltage	Lumen	Beam Angle	Packing Size	Pcs/Box
LED chips - 2835							
B-11LED9-24B	9W	12*2	100V-240V	750	100°	265*175*230	4



B-11D

Code	Power	LED Qty	Input Voltage	Lumen	Beam Angle	Packing Size	Pcs/Box
LED chips - 2835							
B-11DLED18-48B	18W	12*4	100V-240V	1500	100°	295*225*225	4



B-11R

Code	Power	LED Qty	Input Voltage	Lumen	Beam Angle	Packing Size	Pcs/Box
LED chips - 2835							
B-11RLED9-24B	9W	12*2	100V-240V	750	100°	365*190*230	4



B-12
12W



B-12D
9W*2

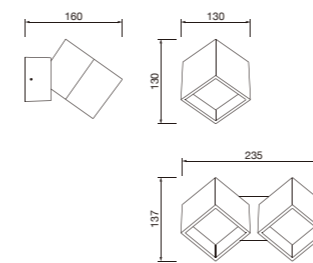
简述 Description



- 铝压铸灯体外壳，超白磨砂钢化玻璃，具有很好的光舒适性
- 模组式光源模块，灯具光照角度可调
- 防紫外线聚氨酯塑粉喷涂表面，耐腐蚀可以达到1000小时以上
- 无生物蓝光危害风险，符合EN62471: 2008 标准
- 灯具表面最高温度不超过50度，安全可靠

- Die-casting aluminium body, super white frosted tempered glass, with high visual comfort light distribution.
- LED module design, and the module angle can adjustable.
- Surface anti-ultraviolet pure polyester powder painting, Corrosion resistance can be more than 1000 hours.
- No photo-biological risk, in accordance with EN 62471:2008.
- The maximum surface temperature of all accessible part under 50 degrees for safety and reliable.

技术参数 Technology data



B-12

Code	Power	LED Qty	Input Voltage	Lumen	Beam Angle	Packing Size	Pcs/Box
LED chips - 3030							
B-12LED12-10B	12W	10	100V-240V	1050	85°	305*265*195	4
B-12DLED18-20B	18W	10*2	100V-240V	2100	85°	305*270*380	4

延伸产品 More in family



C-12
Bollard Lighting: 12W.



C-12D
Bollard Lighting: 18W.

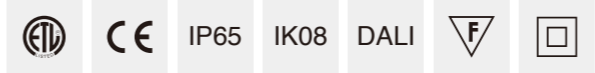


B-13
12W



B-13B
25W

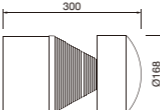
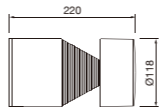
简述 Description



- 铝压铸盖帽，铝合金拉伸灯体，可根据需要截取不同高度
- 高透明PC扩散罩，能有效防止发黄老化，并具有很好的出光视觉效果
- 防紫外线聚氨酯塑粉喷涂表面，耐腐蚀可以达到1000小时以上
- 无生物蓝光危害风险，符合EN62471: 2008 标准
- 灯具表面最高温度不超过50度，安全可靠

- Aluminum die casting cover, extruded aluminum alloy body, it can be cut different heights.
- High transparent PC diffuser, it can effectively prevent yellowing and aging. with high visual comfort light distribution.
- Surface anti-ultraviolet pure polyester powder painting, Corrosion resistance can be more than 1000 hours.
- No photo-biological risk, in accordance with EN 62471:2008.
- The maximum surface temperature of all accessible part under 50 degrees for safety and reliable.

技术参数 Technology data



B-13								
Code	Power	LED Qty	Input Voltage	Lumen	Beam Angle	Packing Size	Pcs/Box	
LED chips - 2835								
B-13LED12-42B	12W	42	100V-240V	1080	120°	275*275*260	4	

B-13B								
Code	Power	LED Qty	Input Voltage	Lumen	Beam Angle	Packing Size	Pcs/Box	
LED chips - 2835								
B-13BLED25-56B	25W	56	100V-240V	2250	120°	375*375*340	4	

延伸产品 More in family



C-13
Bollard Lighting: 12W.

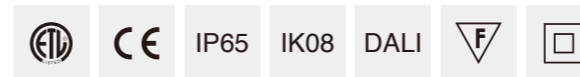


C-13BS
Bollard Lighting: 25W.



B-13A
12W

简述 Description



- 铝压铸灯具端盖和安装连接件，造型简洁实用
- 高透明PC扩散罩，能有效防止发黄老化
- 灯具采用间接投射发光模式，具有很好的视觉舒适性
- 高性能LED芯片，驱动有0-10V / DALI / 编程电源选择
- 防紫外线聚氨酯塑料喷涂表面
- 无生物蓝光危害风险，符号EN62471: 2008 标准
- 灯具表面最高温度不超过50度，安全可靠

其他功能选项:

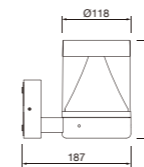
移动感应功能 / 双色温切换功能

- Aluminum die casting cover and installation connector, simple and practical shape.
- High transparent PC diffuser, it can effectively prevent yellowing and aging.
- Indirect light luminaire for use with led, which has high visual comfort.
- High quality LED chips, Driver with 0-10V/DALI/programmed options.
- Surface anti-ultraviolet pure polyester powder painting.
- No photo-biological risk, in accordance with EN 62471:2008.
- The maximum surface temperature of all accessible part under 50 degrees for safety and reliable.

Other Options:

Move sensor options / Colour temperature options

技术参数 Technology data



B-13A

Code	Power	LED Qty	Input Voltage	Lumen	Beam Angle	Packing Size	Pcs/Box
LED chips - 2835							
B-13ALED12-56	12W	56	100V-240V	1080	120°	400*260*200	4

延伸产品 More in family



C-13A

Bollard Lighting: 12W.



B-14 Series

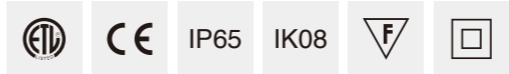


B-14
9W



B-14D
6W*2

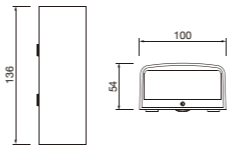
简述 Description



- 灯具外壳采用铝合金压铸成型
- 超白磨砂钢化玻璃，具有高视觉舒适性和均匀配光
- 防紫外线聚氨酯粉喷涂表面，耐腐蚀可以达1000小时以上
- 无生物蓝光危害风险，符合EN62471: 2008 标准
- 灯具表面最高温度不超过50度，安全可靠

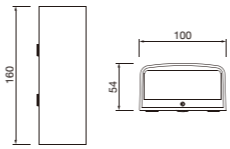
- The lighting body made by die-casting aluminium.
- Super white frosted tempered glass, with high visual comfort and uniform lighting distribution.
- Surface anti-ultraviolet pure polyester powder painting, Corrosion resistance can be more than 1000 hours.
- No photo-biological risk, in accordance with EN 62471:2008.
- The maximum surface temperature of all accessible part under 50 degrees for safety and reliable.

技术参数 Technology data



B-14

Code	Power	LED Qty	Input Voltage	Lumen	Beam Angle	Packing Size	Pcs/Box
LED chips - 3030 B-14LED9-5B	9W	5	100V-240V	750	100°	245*170*160	4

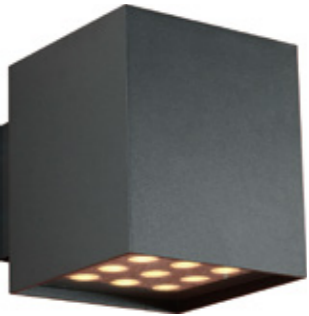


B-14D

Code	Power	LED Qty	Input Voltage	Lumen	Beam Angle	Packing Size	Pcs/Box
LED chips - 3030 B-14DLED12-10B	12W	5*2	100V-240V	1080	100°	245*190*160	4

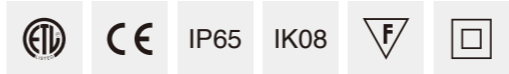


B-16S/16SD
9W/9W*2



B-16M/16MD
20W/20W*2

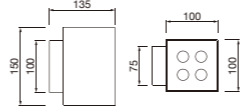
简述 Description



- 铝压铸灯具底座及散热组件，铝合金拉伸外壳
- 超白丝印钢化玻璃，具有高视觉舒适性和均匀配光，出光角可以选
- 防紫外线聚氨酯塑粉喷涂表面，耐腐蚀可以达1000小时以上
- 无生物蓝光危害风险，符合EN62471: 2008 标准
- 灯具表面最高温度不超过50度，安全可靠

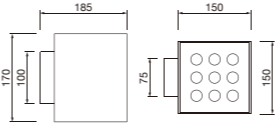
- Aluminum die casting base and heatsink, extruded aluminum alloy body.
- Super white screen printing tempered glass. with high visual comfort light distribution, different optical be option.
- Surface anti-ultraviolet pure polyester powder painting, Corrosion resistance can be more than 1000 hours.
- No photo-biological risk, in accordance with EN 62471:2008.
- The maximum surface temperature of all accessible part under 50 degrees for safety and reliable.

技术参数 Technology data



B-16S/16SD

Code	Power	LED Qty	Input Voltage	Lumen	Beam Angle	Packing Size	Pcs/Box
LED chips - 3535							
B-16SLED9-4A	9W	4	100V-240V	950	25°/40°	305*235*190	4
B-16SDLED18-8A	18W	4*2	100V-240V	1900	25°/40°	305*235*190	4



B-16M/16MD

Code	Power	LED Qty	Input Voltage	Lumen	Beam Angle	Packing Size	Pcs/Box
LED chips - 3535							
B-16MLED20-9A	20W	9	100V-240V	2000	25°/40°	385*345*225	4
B-16MDLED40-18A	40W	9*2	100V-240V	4000	25°/40°	385*345*225	4



B-17 Series



B-17S/17SD
12W/10W*2

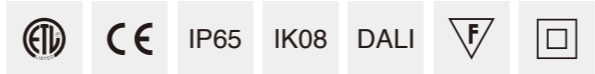


B-17M/17MD
20W/20W*2



B-17L/17LD
40W/40W*2

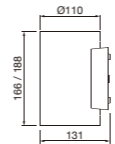
简述 Description



- 铝压铸灯具底座及散热组件，铝合金拉伸灯具外壳
- 超白钢化玻璃，具有高视觉舒适性和均匀配光
- 防紫外线聚氨酯粉末喷涂表面，耐腐蚀可以达1000小时以上
- 无生物蓝光危害风险，符合EN62471: 2008 标准
- 灯具表面最高温度不超过50度，安全可靠

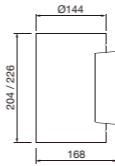
- Aluminum die casting base and heatsink, extruded aluminum alloy body.
- Super white tempered glass. with high visual comfort light distribution.
- Surface anti-ultraviolet pure polyester powder painting, Corrosion resistance can be more than 1000 hours.
- No photo-biological risk, in accordance with EN 62471:2008.
- The maximum surface temperature of all accessible part under 50 degrees for safety and reliable.

技术参数 Technology data



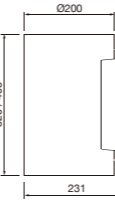
B-17S/17SD

Code	Power	LED Qty	Input Voltage	Lumen	Beam Angle	Packing Size	Pcs/Box
LED chips - COB							
B-17SLED12-1C	12W	1	100V-240V	1020	80°	255*185*300	4
B-17SDLED20-2C	20W	1*2	100V-240V	1668	80°	255*215*300	4



B-17M/17MD

Code	Power	LED Qty	Input Voltage	Lumen	Beam Angle	Packing Size	Pcs/Box
LED chips - COB							
B-17MLED20-1C	20W	1	100V-240V	1950	90°	325*230*380	4
B-17MDLED40-2C	40W	1*2	100V-240V	3800	90°	325*250*380	4



B-17L/17LD

Code	Power	LED Qty	Input Voltage	Lumen	Beam Angle	Packing Size	Pcs/Box
LED chips - COB							
B-17LLED40-1C	40W	1	100V-240V	4200	25°/36°/60°	500*440*420	4
B-17LDLED80-2C	80W	1*2	100V-240V	8200	25°/36°/60°	500*440*440	4



B-18 Series



B-18

6W

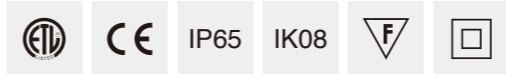


B-18D

6W*2



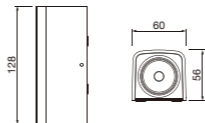
简述 Description



- 灯具外壳采用铝合金压铸成型
- 超白磨砂钢化玻璃，具有高视觉舒适性和均匀配光
- 防紫外线聚氨酯塑粉喷涂表面，耐腐蚀可以达1000小时以上
- 无生物蓝光危害风险，符合EN62471: 2008 标准
- 灯具表面最高温度不超过50度，安全可靠

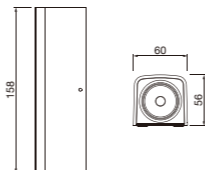
- The lighting body made by die-casting aluminium.
- Super white tempered glass, with high visual comfort and uniform lighting distribution.
- Surface anti-ultraviolet pure polyester powder painting, Corrosion resistance can be more than 1000 hours.
- No photo-biological risk, in accordance with EN 62471:2008.
- The maximum surface temperature of all accessible part under 50 degrees for safety and reliable.

技术参数 Technology data



B-18

Code	Power	LED Qty	Input Voltage	Lumen	Beam Angle	Packing Size	Pcs/Box
LED chips - COB B-18LED6-1C	6W	1	100V-240V	480	70°	300*230*160	12



B-18D

Code	Power	LED Qty	Input Voltage	Lumen	Beam Angle	Packing Size	Pcs/Box
LED chips - COB B-18DLED12-2C	12W	1*2	100V-240V	1020	70°	360*230*160	12



B-140

6W



B-140D

6W*2

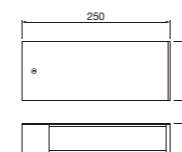
简述 Description



- 铝压铸盖帽，铝合金拉伸灯体，可根据需要截取不同高度
- 高透明PC扩散罩，能有效防止发黄老化，并具有很好的出光视觉效果
- 防紫外线聚氨酯塑粉喷涂表面，耐腐蚀可以达到1000小时以上
- 无生物蓝光危害风险，符合EN62471: 2008 标准
- 灯具表面最高温度不超过50度，安全可靠

- Aluminum die casting cover, extruded aluminum alloy body, it can be cut different heights.
- High transparent PC diffuser, it can effectively prevent yellowing and aging. with high visual comfort light distribution.
- Surface anti-ultraviolet pure polyester powder painting, Corrosion resistance can be more than 1000 hours.
- No photo-biological risk, in accordance with EN 62471:2008.
- The maximum surface temperature of all accessible part under 50 degrees for safety and reliable.

技术参数 Technology data



B-140

Code	Power	LED Qty	Input Voltage	Lumen	Beam Angle	Packing Size	Pcs/Box
LED chips - 2835							
B-140LED6-48B	6W	48	100V-240V	450	100°	385*320*300	8
B-140DLED12-96B	12W	48*2	100V-240V	900	100°	385*320*300	8

延伸产品 More in family



C-140

Bollard Lighting: 10W / 15W.



C-140D

Bollard Lighting: 15W / 25W.



B-142

12W

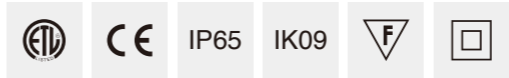


B-142S

2.5W/0.1W



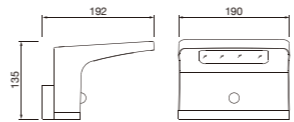
简述 Description



- 铝压铸灯体外壳，PC棱纹透明罩，具有高视觉舒适性和均匀配光透镜
- 灯具具有常规供电和太阳能供电2个版本供选择
- 防紫外线聚氨酯塑粉喷涂表面，耐腐蚀可以达1000小时以上
- 无生物蓝光危害风险，符号EN62471: 2008 标准
- 灯具表面最高温度不超过50度，安全可靠

- Die-casting aluminium body, PC prism transparent diffuser with high visual comfort and uniform lighting distribution.
- There are two version design: AC input normally version and solar version.
- Surface anti-ultraviolet pure polyester powder painting, Corrosion resistance can be more than 1000 hours.
- No photo-biological risk, in accordance with EN 62471:2008.
- The maximum surface temperature of all accessible part under 50 degrees for safety and reliable.

技术参数 Technology data



B-142

Code	Power	LED Qty	Input Voltage	Lumen	Beam Angle	Packing Size	Pcs/Box
LED chips - 2835							
B-142LED12-60B	12W	60	100V-240V	720	100°	460*260*420	4
B-142SLED3-60B	2.5W/0.1W	60	SOLAR+SENSOR	250	100°	460*260*420	4

延伸产品 More in family



C-142

Bollard Lighting: 12W.



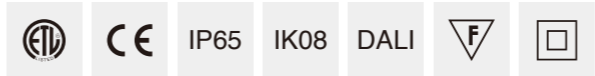
C-142S

Bollard Lighting: 2.5W / 0.1W.



B-190R
12W

简述 Description



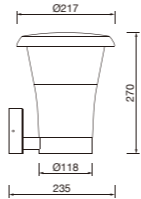
- 铝压铸灯具端盖和安装连接件，造型简洁实用
- 高透明PC扩散罩，能有效防止发黄老化
- 灯具采用间接投射发光模式，具有很好的视觉舒适性
- 高性能LED芯片，驱动有0-10V / DALI / 编程电源选择
- 防紫外线聚氨酯塑料喷涂表面
- 无生物蓝光危害风险，符号EN62471: 2008 标准
- 灯具表面最高温度不超过50度，安全可靠

其他功能选项:
移动感应功能 / 双色温切换功能

- Aluminum die casting cover and installation connector, simple and practical shape.
- High transparent PC diffuser, it can effectively prevent yellowing and aging.
- Indirect light luminaire for use with led, which has high visual comfort.
- High quality LED chips, Driver with 0-10V/DALI/programmed options.
- Surface anti-ultraviolet pure polyester powder painting.
- No photo-biological risk, in accordance with EN 62471:2008.
- The maximum surface temperature of all accessible part under 50 degrees for safety and reliable.

Other Options:
Move sensor options / Colour temperature options

技术参数 Technology data



B-190R	Code	Power	LED Qty	Input Voltage	Lumen	Beam Angle	Packing Size	Pcs/Box
	LED chips - 5050							
	B-190RLED12-5D	12W	5	100V-240V	1080	120°	490*460*305	4

延伸产品 More in family



C-190R
Bollard Lighting: 12W.



B-211
25W

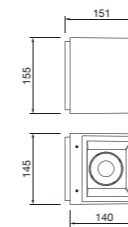
简述 Description



- 铝压铸盖帽，铝合金拉伸灯体，可根据需要截取不同高度
- 超白丝印钢化玻璃，具有高视觉舒适性和均匀配光，出光角可以选
- 防紫外线聚氨酯塑粉喷涂表面，耐腐蚀可以达1000小时以上
- 无生物蓝光危害风险，符合EN62471: 2008 标准
- 灯具表面最高温度不超过50度，安全可靠

- Aluminum die casting cover, extruded aluminum alloy body, it can be cut different heights.
- Super white screen printing tempered glass. with high visual comfort light distribution, different optical be option.
- Surface anti-ultraviolet pure polyester powder painting, Corrosion resistance can be more than 1000 hours.
- No photo-biological risk, in accordance with EN 62471:2008.
- The maximum surface temperature of all accessible part under 50 degrees for safety and reliable.

技术参数 Technology data



B-211

Code	Power	LED Qty	Input Voltage	Lumen	Beam Angle	Packing Size	Pcs/Box
B-211LED25-2C	25W	2	100V-240V	2250	15°/24°/36°/50°	330*310*200	4

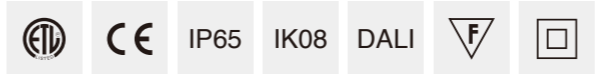


B-201



B-201
25W

简述 Description



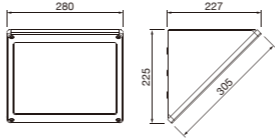
- 铝压铸灯体外壳，布纹钢化玻璃，具有高视觉舒适性和均匀光输出
- 高性能LED芯片，驱动有0-10V / DALI / 编程电源选择
- 灯具采用LED 模组式设计，模块式电器部件，安装更换方便
- 防紫外线聚氨酯塑粉喷涂表面，耐腐蚀可以达到1000小时以上
- 无生物蓝光危害风险，符合EN62471: 2008 标准
- 灯具表面最高温度不超过50度，安全可靠

其他功能选项:
微波感应功能 / 应急功能 / 双色温切换功能

- Die-casting aluminium body, prism super tempered glass, with high visual comfort and uniform lighting distribution.
- High quality LED chips, Driver with 0-10V/DALI/programmed options.
- LED module designed, Integrated components which is easy to install and replace.
- Surface anti-ultraviolet pure polyester powder painting, Corrosion resistance can be more than 1000 hours.
- No photo-biological risk, (no risk linked to infrared, blue light and UV radiation) in accordance with EN 62471:2008.
- The maximum surface temperature of all accessible part under 50 degrees for safety and reliable.

Other Options:
Microwave options / Emergency options / Colour temperature options

技术参数 Technology data



B-201		Power	LED Qty	Input Voltage	Lumen	Beam Angle	Packing Size	Pcs/Box
Code	LED chips - 2835							
B-201LED25-132		25W	132	100V-240V	2360	100°	410*335*310	2



X-01 Series
Ceiling lighting



X-01S
12W



X-01M
25W

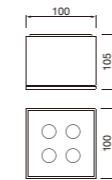
简述 Description



- 铝压铸灯具底座及散热组件，铝合金拉伸外壳
- 超白丝印钢化玻璃，具有高视觉舒适性和均匀配光，出光角可以选
- 防紫外线聚氨酯塑粉喷涂表面，耐腐蚀可以达到1000小时以上
- 无生物蓝光危害风险，符合EN62471: 2008 标准
- 灯具表面最高温度不超过50度，安全可靠

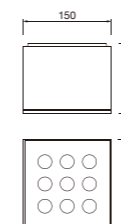
- Aluminum die casting base and heatsink, extruded aluminum alloy body.
- Super white screen printing tempered glass. with high visual comfort light distribution, different optical be option.
- Surface anti-ultraviolet pure polyester powder painting, Corrosion resistance can be more than 1000 hours.
- No photo-biological risk, in accordance with EN 62471:2008.
- The maximum surface temperature of all accessible part under 50 degrees for safety and reliable.

技术参数 Technology data



X-01S

Code	Power	LED Qty	Input Voltage	Lumen	Beam Angle	Packing Size	Pcs/Box
LED chips - 3535 X-01SLED12-4	12W	4	100V-240V	1050	25°/40°	305*305*280	8



X-01M

Code	Power	LED Qty	Input Voltage	Lumen	Beam Angle	Packing Size	Pcs/Box
LED chips - 3535 X-01MLED25-9	25W	9	100V-240V	2150	25°/40°	395*205*320	4



X-02S1
9W

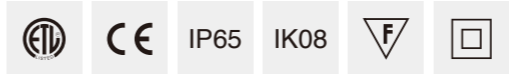


X-02S
12W



X-02M
25W/36W

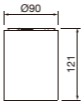
简述 Description



- 铝压铸灯具底座及散热组件，快速旋入式安装结构，安装维护非常方便
- 超白钢化玻璃，具有高视觉舒适性和均匀配光
- 防紫外线聚氨酯塑粉喷涂表面，耐腐蚀可以达到1000小时以上
- 无生物蓝光危害风险，符合EN62471: 2008 标准
- 灯具表面最高温度不超过50度，安全可靠

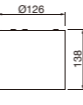
- Aluminum die casting base and heatsink, fast fix structure design, installation and maintenance is very convenient.
- Super white tempered glass. with high visual comfort light distribution.
- Surface anti-ultraviolet pure polyester powder painting, Corrosion resistance can be more than 1000 hours.
- No photo-biological risk, in accordance with EN 62471:2008.
- The maximum surface temperature of all accessible part under 50 degrees for safety and reliable.

技术参数 Technology data



X-02S1

Code	Power	LED Qty	Input Voltage	Lumen	Beam Angle	Packing Size	Pcs/Box
LED chips - 3030							
X-02S1LED9-12B	9W	12	220V~240V	825	80°	200*200*260	8



X-02S

Code	Power	LED Qty	Input Voltage	Lumen	Beam Angle	Packing Size	Pcs/Box
LED chips - COB							
X-02SLED12-1C	12W	1	220V~240V	1040	80°	285*285*335	8



X-02M

Code	Power	LED Qty	Input Voltage	Lumen	Beam Angle	Packing Size	Pcs/Box
LED chips - COB							
X-02MLED25-1C	25W	1	220V~240V	2250	90°	380*195*350	4
X-02MLED36-1C	36W	1	220V~240V	3060	90°	380*195*350	4

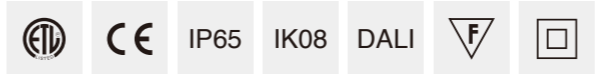


X-03
25W



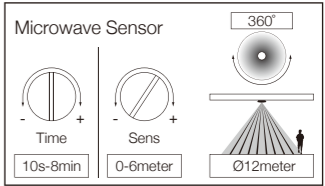
X-03SR
25W

简述 Description



- 铝压铸灯具底座及散热组件，PC密封电器箱设计
- 超白磨砂扩散透明罩，具有高视觉舒适性和均匀配光
- 防紫外线聚氨酯塑料喷涂表面，耐腐蚀可以达1000小时以上
- 无生物蓝光危害风险，符合EN62471: 2008 标准
- 灯具具有智能微波感应可选

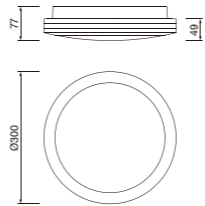
- Aluminum die casting base and heatsink, PC electrical housing design.
- Super white frosted PC diffuser. with high visual comfort light distribution.
- Surface anti-ultraviolet pure polyester powder painting, corrosion resistance can be more than 1000 hours.
- No photo-biological risk, in accordance with EN 62471:2008.
- The ceiling lighting is available with microwave sensor option.



其他功能选项:
微波感应功能 / 应急功能 / 双色温切换功能

Other Options:
Microwave options / Emergency options / Colour temperature options

技术参数 Technology data



X-03								
Code	Power	LED Qty	Input Voltage	Lumen	Beam Angle	Packing Size	Pcs/Box	
LED chips - 2835								
X-03LED25-108B	25W	108	100V-240V	2350	100°	320*320*355	4	
X-03SR								
Code	Power	LED Qty	Input Voltage	Lumen	Beam Angle	Packing Size	Pcs/Box	
LED chips - 2835								
X-03SRLED25-108B	25W	108	100V-240V	2350	100°	320*320*355	4	